



Sage Pastel Evolution Mobile App

Taking your sales force
to your customers.



This module requires the multi-warehousing add-on module.

Sage Evolution Mobile

Businesses are constantly changing and modernising to be more competitive. Evolution Mobile extends your business to the field, by taking advantage of tablet devices' ability to facilitate real-time, face-to-face customer interactions.

Evolution Mobile is a business application which provides instant and secure access to customer, inventory and other key business information.

Sales executives and business managers can access real-time information enabling them to operate more efficiently. This extends your organisation's borders allowing you to transact anywhere, anytime. Transform your business by enabling in-the-moment sales order creations and increase field sales force productivity with Sage Evolution Mobile.

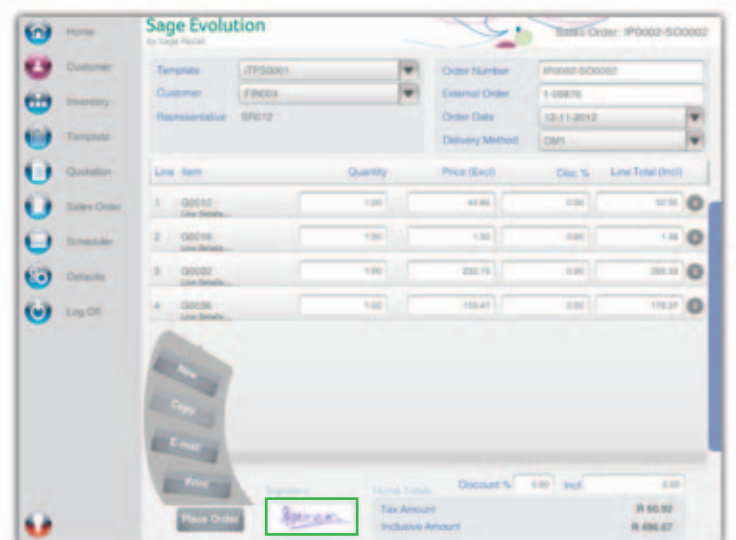


The screen above is an example of the home screen. This screen can be customised per user.

Extend your business borders and transact anywhere, anytime.

Sage Evolution Mobile offers the following key features:

- Key performance indicators and comprehensive dashboards.
- Real-time inventory levels, customer and balance information.
- Create templates and process quotations and sales orders.
- Incorporates line discounts supporting both amount and percentage.
- Fast flexible searching capabilities enables you to quickly and easily look-up prices and stock availability.
- E-mail confirmed sales orders to customers.
- Access permissions for each sales representative allowing you to limit their access to their own customised KPIs.
- Task scheduler facilitates setting up meetings.
- The built-in mapping system gives sales representatives the location of their customers' offices.
- Automated and seamless integration process.



The screen above is an example of a Sales Order that has been processed. The customer physically signed the tablet as confirmation of the order.

Operate more efficiently

The easy to use graphical interface is simple to understand thereby keeping staff training time to a minimum, and allows you to operate in offline mode on a local database when there is a break in connectivity. Furthermore, Sage Evolution Mobile accelerates decision making by giving sales representatives live access to customer account information, inventory quantities and the ability to apply discounts.

With Sage Evolution Mobile customers can accept orders by physically signing on a tablet. These features give your sales staff the ability to instantly generate an entire proposal and negotiate terms with customers in the field, resulting in shorter deal closing times.

System Requirements

	Single User	Workstation	Server (< 10 users)	Server (11 - 20 users)
Hardware				
Minimum	Single Core 1 Ghz	Single Core 1 Ghz	Dual Core 2Ghz	Dual Core 2Ghz
Recommended	Dual Core or more 2Ghz or faster	Dual Core or more 2Ghz or faster	Quad Core or more 2Ghz or faster	Quad Core or more 2Ghz or faster

PLEASE NOTE: 32-bit (x86) and 64-bit (x64) processors are supported.

RAM				
Minimum	Microsoft® Windows 7/8 Professional Edition Service Pack 1 or later	Microsoft® Windows 7/8 Professional Edition Service Pack 1 or later	Windows Server Standard Edition Service Pack 2 or later	Windows Server Standard Edition Service Pack 2 or later
Recommended	Microsoft® Windows 7/8 Professional Edition Service Pack 1 or later	Microsoft® Windows 7/8 Professional Edition Service Pack 1 or later	Windows Server Standard Edition Service Pack 2 or later	Windows Server Standard Edition Service Pack 2 or later

Screen Resolution				
Minimum	1024 x 768	1024 x 768	1024 x 768	1024 x 768

Database Server - Recommended				
Microsoft® SQL Server 2008 R2 - Service Pack 1 or later				
Microsoft® SQL Server 2012				

Additional Software Requirements (Server and Workstation)				
Minimum	Microsoft® Excel 2007 or later (for the Business Intelligence Centre module)			
Minimum	.Net 4.00 framework (included in installation disc)			

FTP (File Transfer Protocol) Server				
Recommended	Microsoft® FTP running IIS 6.0 or later (for Branch Accounting environments)			

Evolution Mobile Sales				
Hardware	Samsung Galaxy Note 10.1 N8000 / Samsung Galaxy Tab 10.1 P75000 / iPad 2 or later			
Operating System	IOS 5.1.1 or later			
Web Service	Internet Information Services (IIS) 6 or later			
Connectivity	3G or WiFi			

Additional Important Information				
Recommended	We strongly recommend you speak to your Sage Evolution Business Partner regarding the system requirements recommended for your specific environment.			

- | Other System Requirements | | | | |
|--|--|--|--|--|
| <ul style="list-style-type: none"> • DVD Rom, 256 Colour VGA or SVGA Graphics. Microsoft DirectX 9 graphics device with WDDM driver. • To use touch capabilities in Windows 8, you need a tablet or a monitor that supports multi-touch. • The online help requires Internet Explorer version 6 or higher, or a compatible browser. • Up-to-date network drivers, service packs and updates for your network and operating systems. • Windows 7/8 personal computers/notebooks need to ensure that the recommended RAM memory requirements and Video Graphics adapters are met. • The above serves as a guideline. Hardware requirements may differ depending on the operating system and the version of SQL Server. • For Microsoft® SQL Server 2012, please note that there are additional software requirements to adhere to. Please refer to the SQL Server documentation for more information. | | | | |



SA Contact Details

0861 EVOLUTION
 JHB +27 11 304 3530 CT +27 21 522 7400 DBN +27 31 537 7100
 evolutionsales@pastel.co.za

International Contact Details

Intl Tel: +27 11 304 3400
 info@sagepastel.com